



MTS Metallurgical Testing Services
ABN 54 122 133 331
3/52 Cocos Drive Bibra Lake Western Australia 6163
Tel 08 9418 6380 Fax 08 9434 1328



Test Report

To	Metforce Pty Ltd 86 Furniss Road Landsdale WA 6919	Report No.	MTS-19115 METF
Order No.	PAUL	Issue Date	18/09/2014
		Test Date	18/09/2014

Introduction

Seven (7) handrail brackets were received for testing to the client's requirements. Each bracket was subjected to the progressive application of test load in the downwards direction to simulate the worst possible case of in-service conditions.

Loading was continued until either yielding was observed or a load of 5,500 Newtons (approx 560 kgs) was achieved.

The load achieved before any signs of failure were observed was recorded as the "Load bearing capacity" of the bracket.

Test Item(s) Seven (7) only Handrail Brackets for Glass Balustrades

Standard/Specification Client Specification (Based on the design requirements of AS/NZS 1170)

Results Summary

(For details of individual tests, refer to the tables on the following pages.)

ID	Item/Heat No.	Dimensions/Type/Details	Finish
19115/01	ADJ GLASS	Handrail Bracket, 316 Stainless steel	Polished
19115/02	SUPP DIAMOND	Handrail Bracket, 316 Stainless steel	Polished
19115/03	SUPP FLAT	Handrail Bracket, 316 Stainless steel	Polished
19115/04	SUPP PROFILE	Handrail Bracket, 316 Stainless steel	Polished
19115/05	SUPP SQUARE	Handrail Bracket, 316 Stainless steel	Polished
19115/06	SUPP FRONT10	Handrail Bracket, 316 Stainless steel	Polished
19115/07	SUPP GLASS	Handrail Bracket, 316 Stainless steel	Polished

Remarks

The results of the tests reported herein was not subject to assessment and are provided for information purposes only.

Colin Lorrimar
Metallurgical Testing Manager



Accreditation No: 15624
Accredited for compliance
with ISO/IEC 17025

Results

Load Test - ADJ GLASS

Test Specification Client Specification **Test Procedure** MTS-TP3.1 Compression Tests - Products

Specimen ID	Test Load (N)	Observations	Assessment
19115/01	2,900	The bracket failed by gradual by slipping of the grub screw. Load bearing capacity: Approximately 295 kgs.	NOT ASSESSED



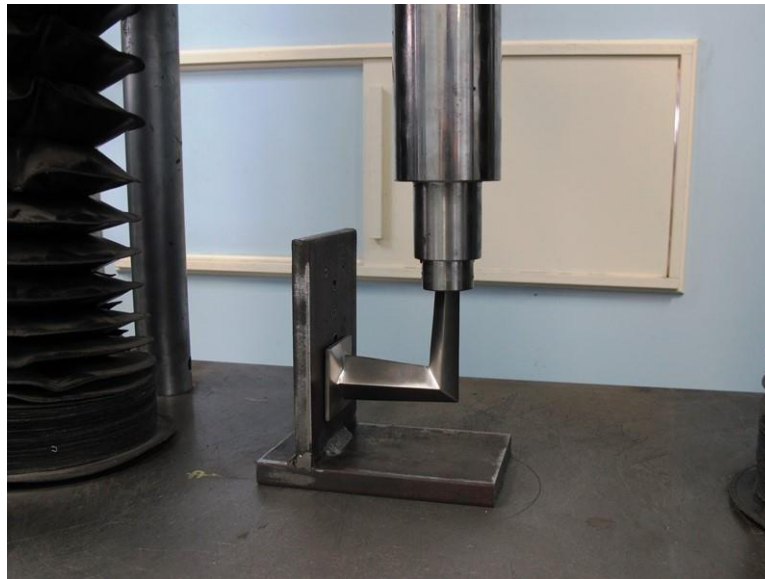
Handrail bracket under the test

Results

Load Test - SUPP DIAMOND

Test Specification Client Specification **Test Procedure** MTS-TP3.1 Compression Tests - Products

Specimen ID	Test Load (N)	Observations	Assessment
19115/02	5,500	No signs of cracking, distortion or other signs of failure. Load bearing capacity: >560 kgs	NOT ASSESSED



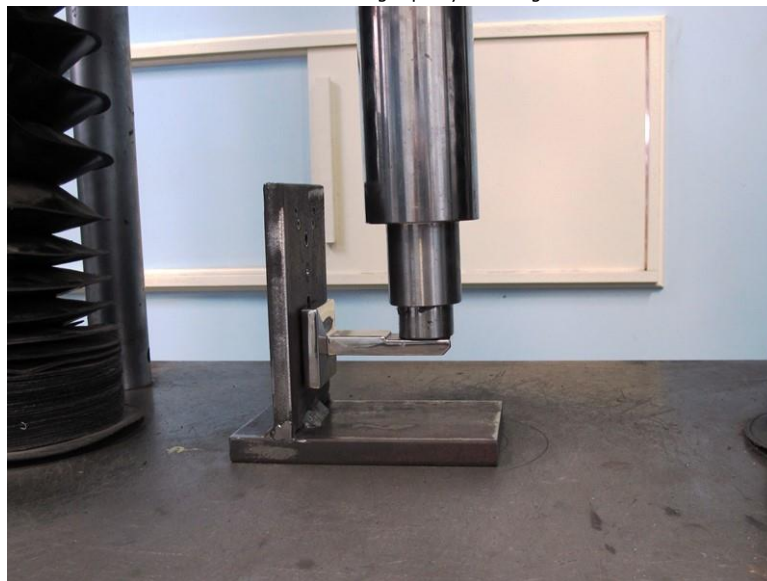
Handrail bracket under the test

Results

Load Test - SUPP FLAT

Test Specification **Test Procedure** MTS-TP3.1 Compression Tests - Products

Specimen ID	Test Load (N)	Observations	Assessment
19115/03	5,500	No signs of cracking, distortion or other signs of failure. Load bearing capacity: >560 kgs.	NOT ASSESSED



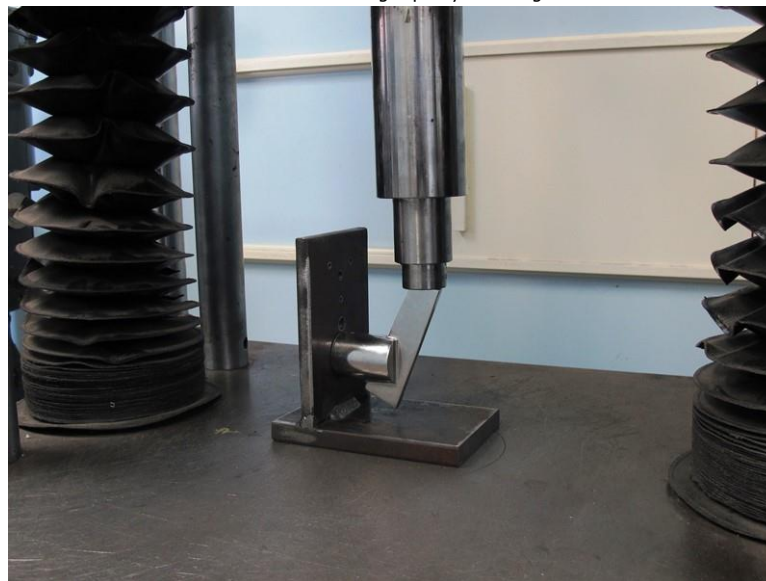
Handrail Bracket under the test

Results

Load Test - SUPP FRONT10

Test Specification Client Specification **Test Procedure** MTS-TP3.1 Compression Tests - Products

Specimen ID	Test Load (N)	Observations	Assessment
19115/06	5,500	No signs of cracking, distortion or other signs of failure. Load bearing capacity: >560 kgs.	NOT ASSESSED



Handrail Bracket under the test

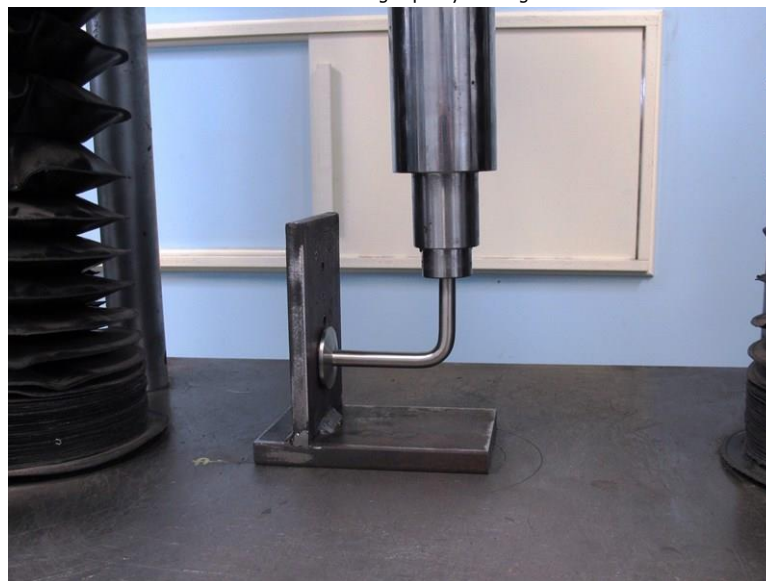
Results

Load Test - SUPP GLASS

Test Specification Client Specification **Test Procedure** MTS-TP3.1 Compression Tests - Products

Specimen ID	Test Load (N)	Observations	Assessment
19115/07	1,200	The bracket failed by gradual distortion at the junction with the round wall plate.	NOT ASSESSED

Load bearing capacity: 122 kgs.



Handrail Bracket under the test

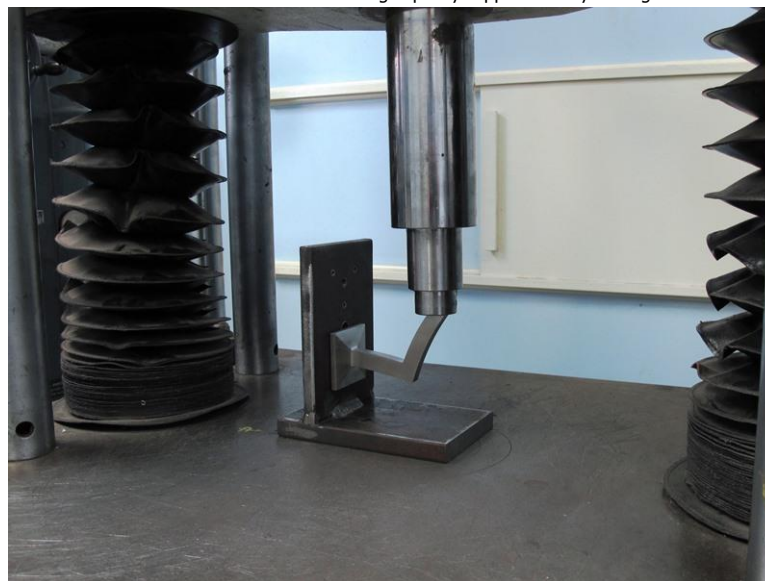
Results

Load Test - SUPP PROFILE

Test Specification **Test Procedure** MTS-TP3.1 Compression Tests - Products

Specimen ID	Test Load (N)	Observations	Assessment
19115/04	2,000	The bracket failed by gradual distortion of the bracket at the junction of the square wall plate.	NOT ASSESSED

Load bearing capacity: Approximately 203 kgs.



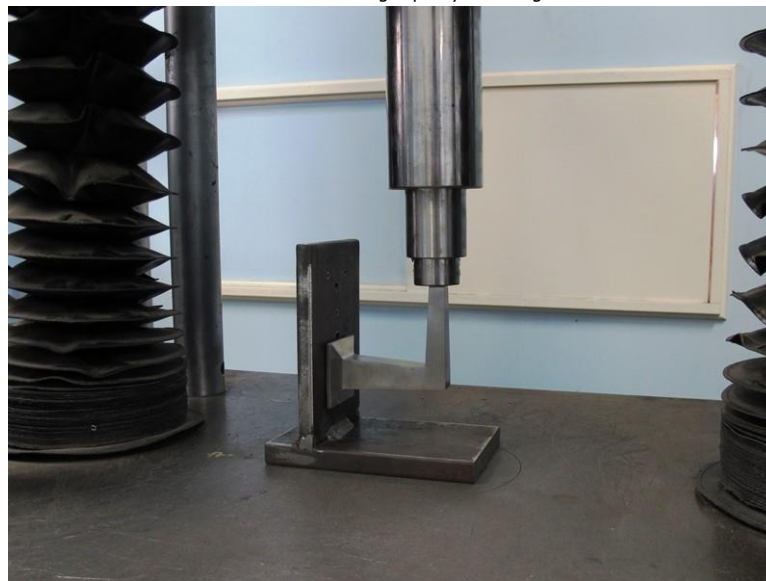
Handrail Bracket under the test

Results

Load Test - SUPP SQUARE

Test Specification Client Specification **Test Procedure** MTS-TP3.1 Compression Tests - Products

Specimen ID	Test Load (N)	Observations	Assessment
19115/05	5,500	No signs of cracking, distortion or other signs of failure. Load bearing capacity: >560 kgs.	NOT ASSESSED



Handrail Bracket under the test