



MTS Metallurgical Testing Services
ABN 54 122 133 331
3/52 Cocos Drive Bibra Lake Western Australia 6163
Tel 08 9418 6380 Fax 08 9434 1328



Test Report

To	Metforce Pty Ltd 86 Furniss Road Landsdale WA 6919	Report No.	MTS-19313 METF
Order No.	PAUL1	Issue Date	4/10/2014
		Test Date	1/10/2014

Introduction

MTS Metallurgical Testing Services was engaged to perform load tests on a frameless glass balustrade to the requirements of AS/NZS 1170.1 - 2002.

Test Item(s) One (1) only Frameless Glass Balustrade with 21 x 25mm Rectangle Slotted Tube Handrail supported on 2 x Square Core Drilled and 2 x Square Deck Mounted spigots.

Details

ID	Item/Heat No.	Dimensions/Type/Details
19313/01		1500mm Long x 12mm Thick x 970mm High toughened safety glass panel. 2205 Duplex stainless steel spigots. Core drilled spigots were fixed with Bostik Tech Flow HES grout and deck mounted spigots were fixed with 4 x Dyna Bolts.

Examinations & Tests

The details and procedure for the installation of the spigot fixings were observed and verified prior to testing. The test panel arrangement consisted of a three glass panel configuration using maximum width panels for worst case scenario. The centre glass panel was removed to simulate a breakage and the top rail and spigots were tested using downward and outward loading in accordance with AS/NZS 1170.1-2002 in the centre of the "broken" panel area.

Summary

The results of the tests reported herein COMPLIED with the requirements of AS/NZS 1170.1 - 2002.

Colin Lorrimar
Metallurgical Testing Manager



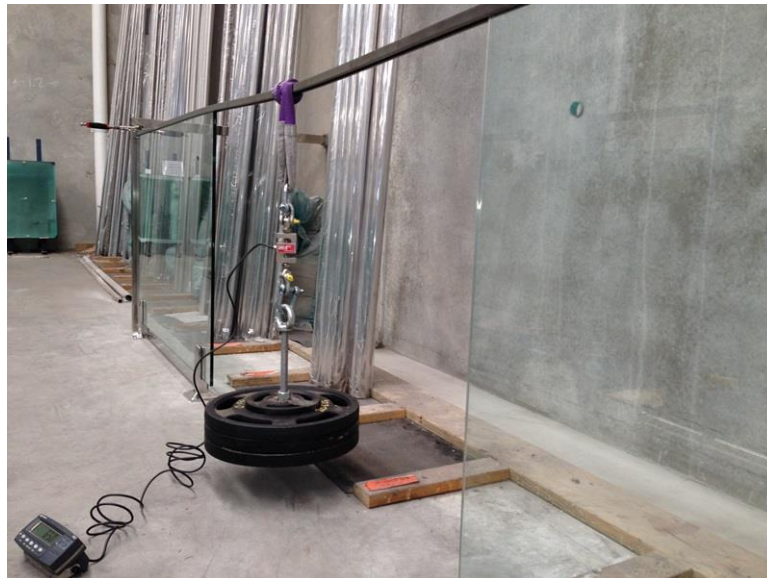
Accreditation No: 15624
Accredited for compliance
with ISO/IEC 17025

Results

Static Load Test

Test Specification AS/NZS 1170.1 - 2002 **Test Procedure** MTS-TP3.7 Load Tests of Protective Enclosures, Barriers and Fences

Specimen ID	Test Load (N)	Observations	Assessment
Top Rail Downwards Test	600	No signs of damage or loosening.	COMPLIES

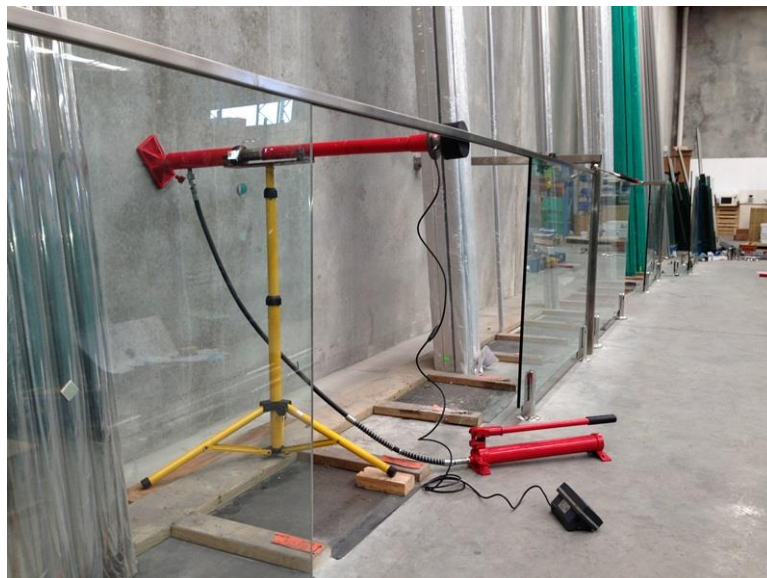


21X25 Rectangle slotted tube under the test
 No signs of damage or loosening.

Top Rail Outwards Test

600

COMPLIES



21X25 Rectangle slotted tube under the test

Requirements No breakage or signs of fracture or loosening of any part.