



MTS Metallurgical Testing Services
ABN 54 122 133 331
3/52 Cocos Drive Bibra Lake Western Australia 6163
Tel 08 9418 6380 Fax 08 9434 1328



Test Report

To	Metforce Pty Ltd 86 Furniss Road Landsdale WA 6919	Report No.	MTS-19305 METF
Order No.	PAUL1	Issue Date	4/10/2014
		Test Date	1/10/2014

Introduction

MTS Metallurgical Testing Services was engaged to perform load tests on a toughened glass pool fence panel to the requirements of AS 1926.1 - 2012.

Test Item(s) One (1) only Frameless glass pool fence panel on Round Deck Mounted spigots.

Details

ID	Item/Heat No.	Dimensions/Type/Details
19305/01		2000mm Long x 12mm Thick x 1200mm High frameless toughened safety glass panel. 2205 Duplex stainless steel spigots - fixed with 4 x Dyna Bolts.

Examinations & Tests

The details and procedure for the installation of the spigot fixings were observed and verified prior to load testing.

Summary

The results of the tests reported herein COMPLIED with the requirements of AS 1926.1 - 2012.

Colin Lorrimar
Metallurgical Testing Manager



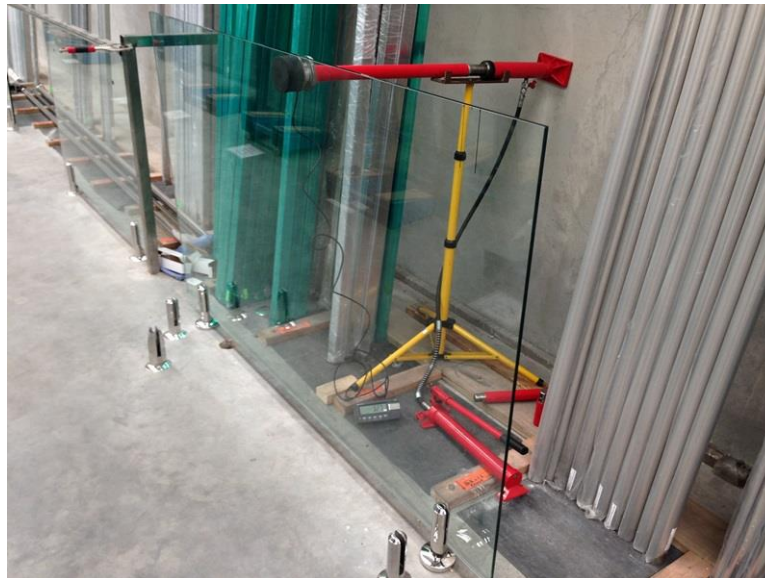
Accreditation No: 15624
Accredited for compliance
with ISO/IEC 17025

Results

Static Load Test

Test Specification AS 1926.1 - 2012, Appendix C **Test Procedure** MTS-TP3.7 Load Tests of Protective Enclosures, Barriers and Fences

Specimen ID	Test Load (N)	Observations	Assessment
19305/01	330	No signs of fracture, loosening or distortion beyond the specified requirements.	COMPLIES



Round Deck mounted spigots under the test

Requirements No breakage or signs of fracture or loosening of any part. Maximum Permanent Distortion: 10mm.